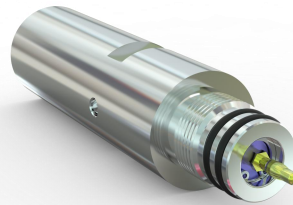
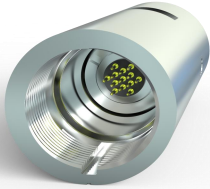


# 13-Core to Single-Core Adapter (13-C-SCA43C)

The tool strings of A-One Oil are all connected using a 13-core connection mode. Enhancing the applicability of the tool string, a **13-Core to Single-Core Adapter (13-C-SCA43C)** can be used when connecting with other tools.



## Specifications

### 13-C-SCA43C

#### General Specs

|                             |                   |
|-----------------------------|-------------------|
| Diameter                    | 43mm (1-11/16 in) |
| Tool Length                 | 183mm (7.2 in)    |
| Weight                      | 1.15kg            |
| Maximum Working Temperature | 175°C             |
| Maximum Working Pressure    | 140Mpa            |
| Conduction Resistance       | < 2Ω              |
| Insulation Resistance       | > 200MΩ           |