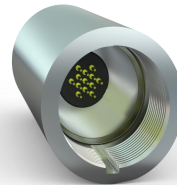
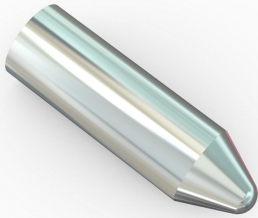


CANBus Terminator (CBT43C)

The **CANBus Terminator (CBT43C)** is primarily used at the bottom of the tool string for CAN bus matching. It ensures the connection of more tool short sections and guarantees the transmission distance.



Specifications

CBT43C	
General Specs	
Diameter	43mm (1-11/16in)
Maximum Working Temperature	175°C
Maximum Working Pressure	140Mpa
Length	142mm (5.6 in)
Weight	0.95kg
Transmission Mode	CAN bus
Upper Connector Mating Standard	13-Core